

SUPPLEMENTAL INFORMATION

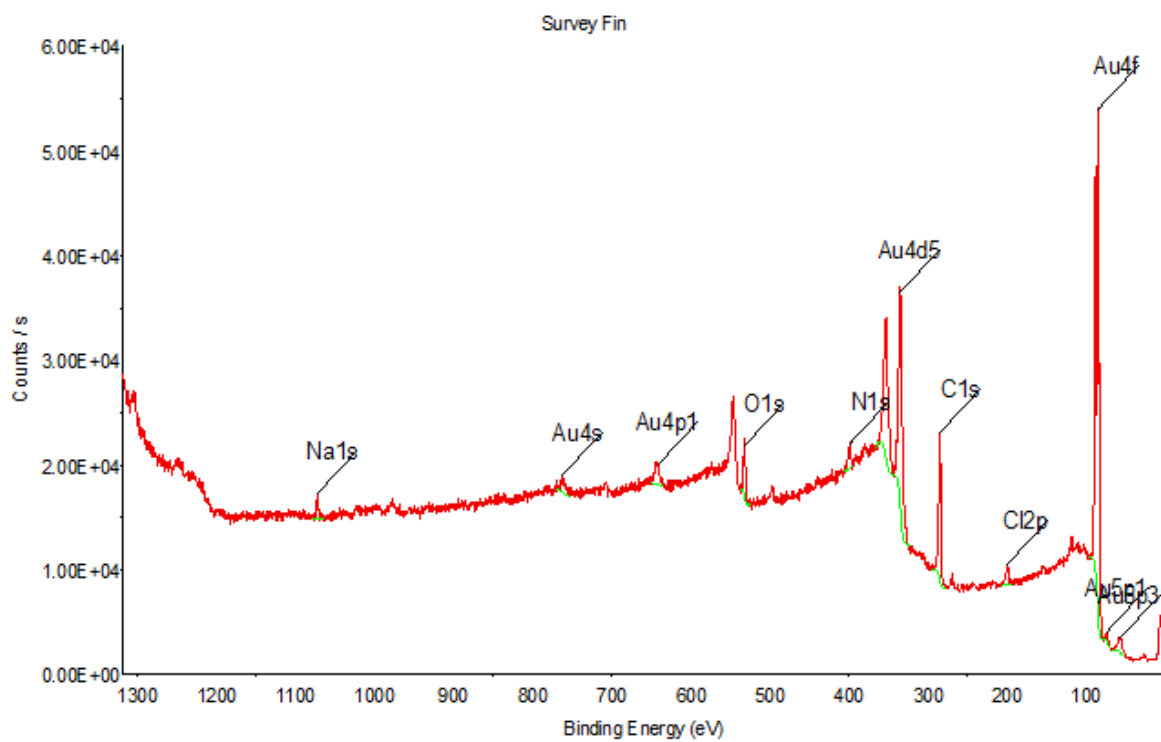
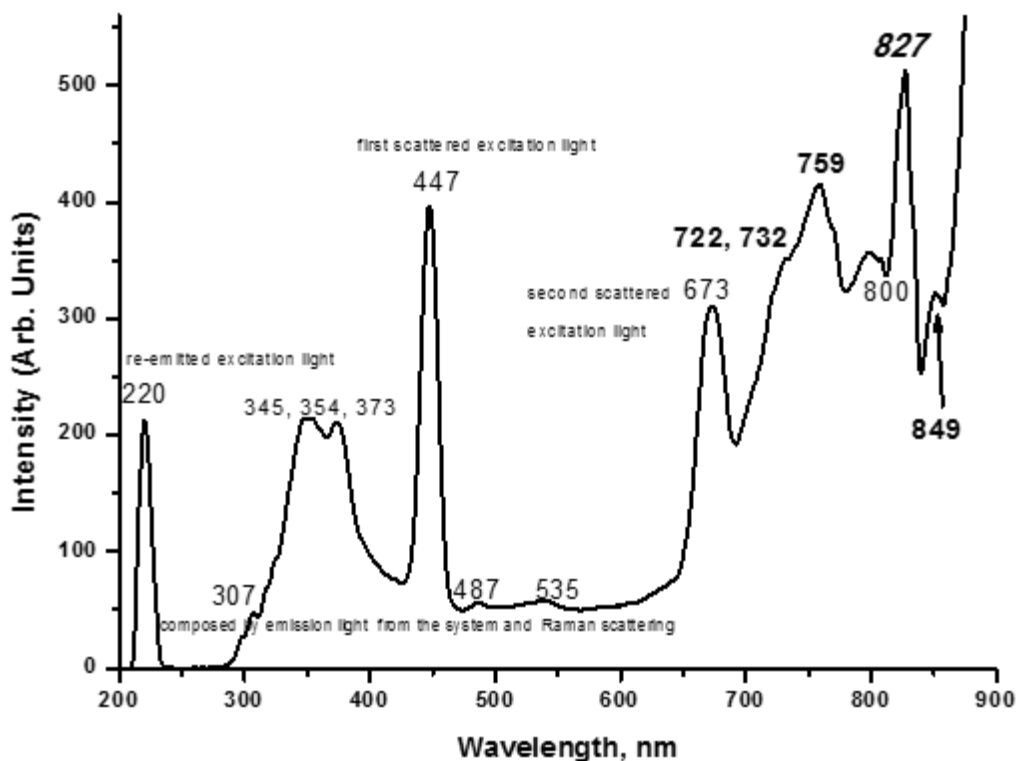
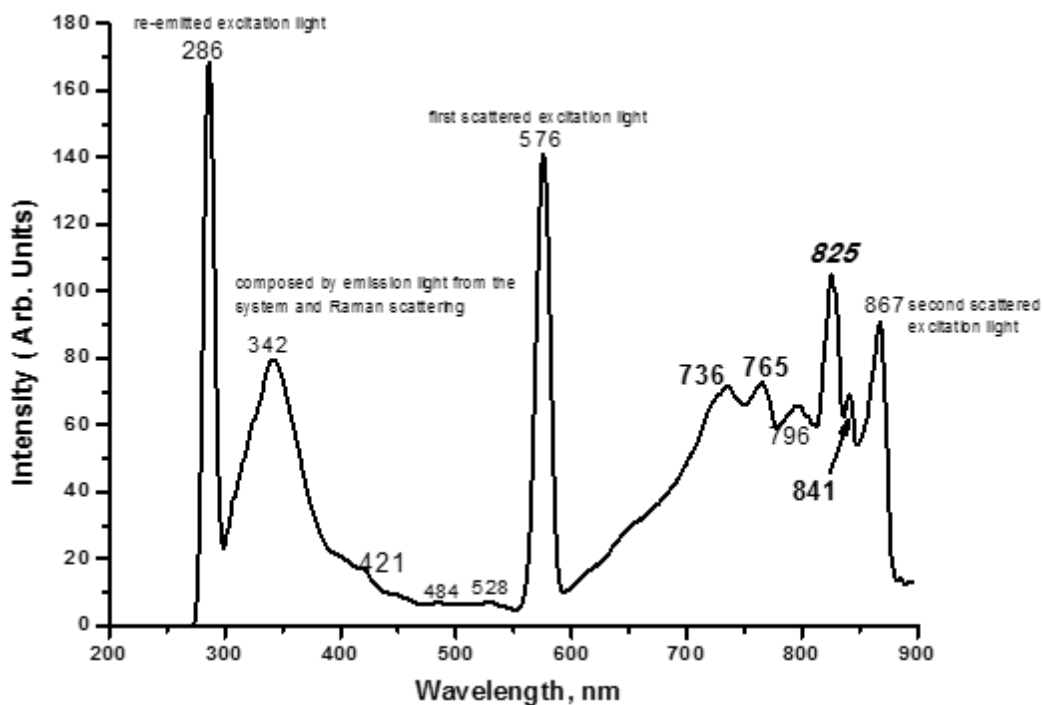


Fig. S1. Survey spectra of the DenAuNP-Folate-Bombesin

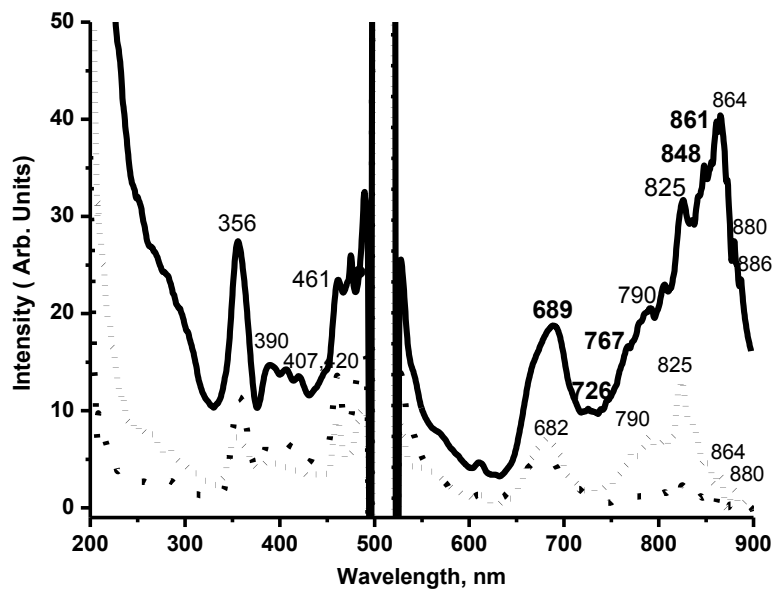


A)

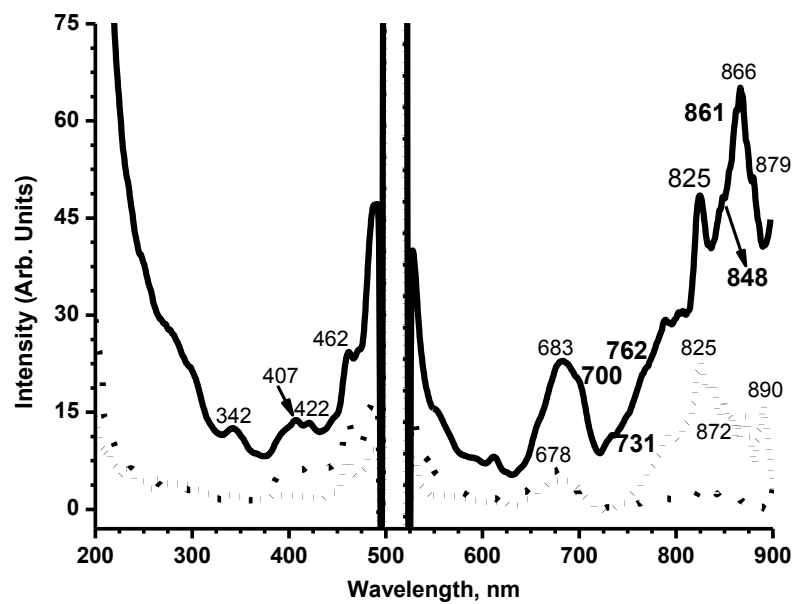


B)

Fig S2. Fluorescence emission spectra of DenAuNP-Folate-Bombesin-Cell, A) excitation wavelength of 222 nm, B) excitation wavelength, 285 nm. Excitation slit: 7 nm and emission slit: 10 nm, and emission filter: 290 nm.



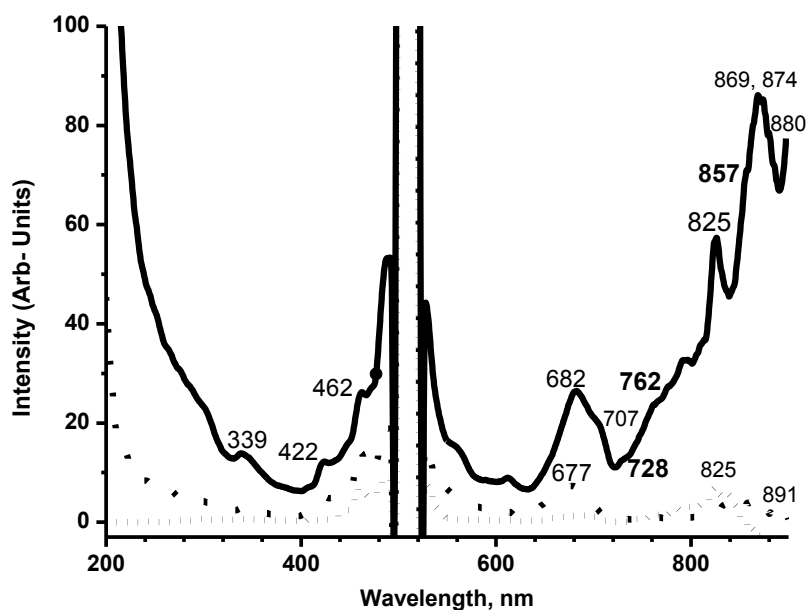
A)



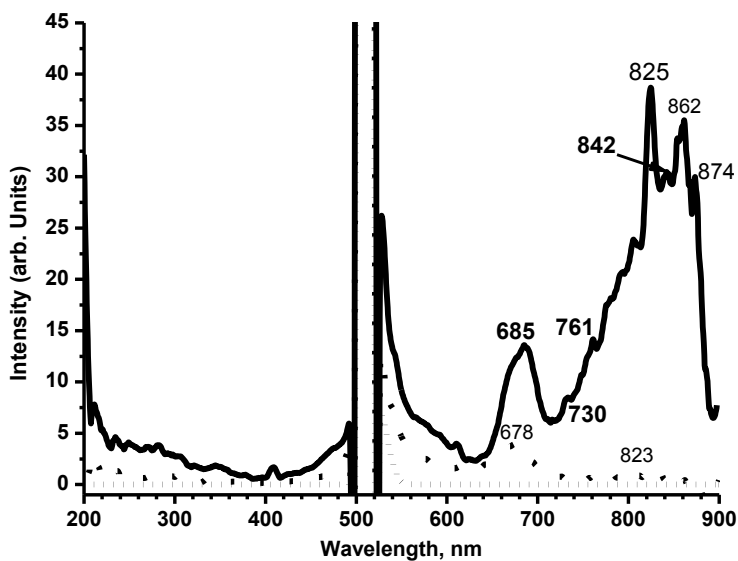
B)

Fig S3. Fluorescence emission spectra of **A)** DenAuNP-Folate-Bombesin-Cell (solid line); T47D cells + Hoechst dye (short dot line); Hoechst dye (dot line). Emission filter: 290 nm. **B)** DenAuNP-Folate-Bombesin-Cell (solid line); T47D cells + Hoechst dye (short dot line); Hoechst dye (dot line). Emission filter: 390 nm. In all cases the samples were on glass coverslips; excitation wavelength of 510 nm, and excitation and emission slits: 5 nm.

Source parameters: Delay time (ms): 10, Gate time(ms): 20, Cycle time(ms): 33, Flash time: 3.



A)



B)

Fig S4. Fluorescence emission spectra of **A)** DenAuNP-Folate-Bombesin-Cell (solid line); T47D cells + Hoechst dye (short dot line); Hoechst dye (dot line). Emission filter: 430 nm. **B)** DenAuNP-Folate-Bombesin-Cell (solid line); T47D cells + Hoechst dye (short dot line); Hoechst dye (dot line). Emission filter: 515 nm. In all cases the samples were on glass coverslips, the excitation wavelength of 510 nm, and excitation and emission slits: 5 nm.

Source parameters: Delay time (ms): 10, Gate time(ms): 20, Cycle time(ms): 33, Flash time: 3.