

Manual técnico

Base de datos Redalyc

2019-2021

Diagrama de Entidad Relación

Febrero 2022

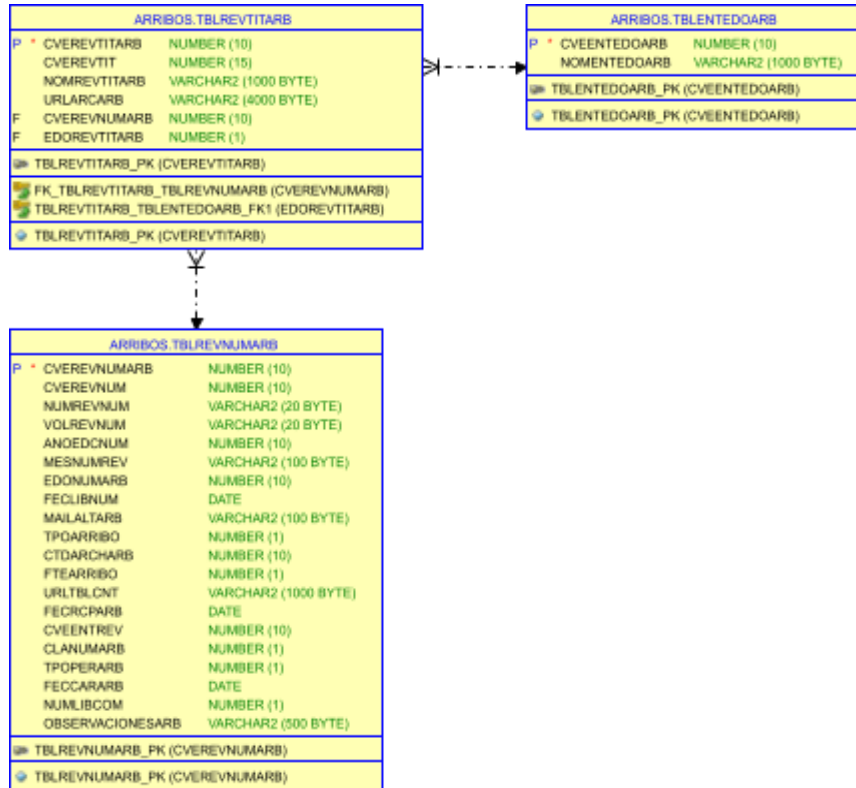
Colaboradores:

Arianna Becerril García,
Eduardo Aguado López.

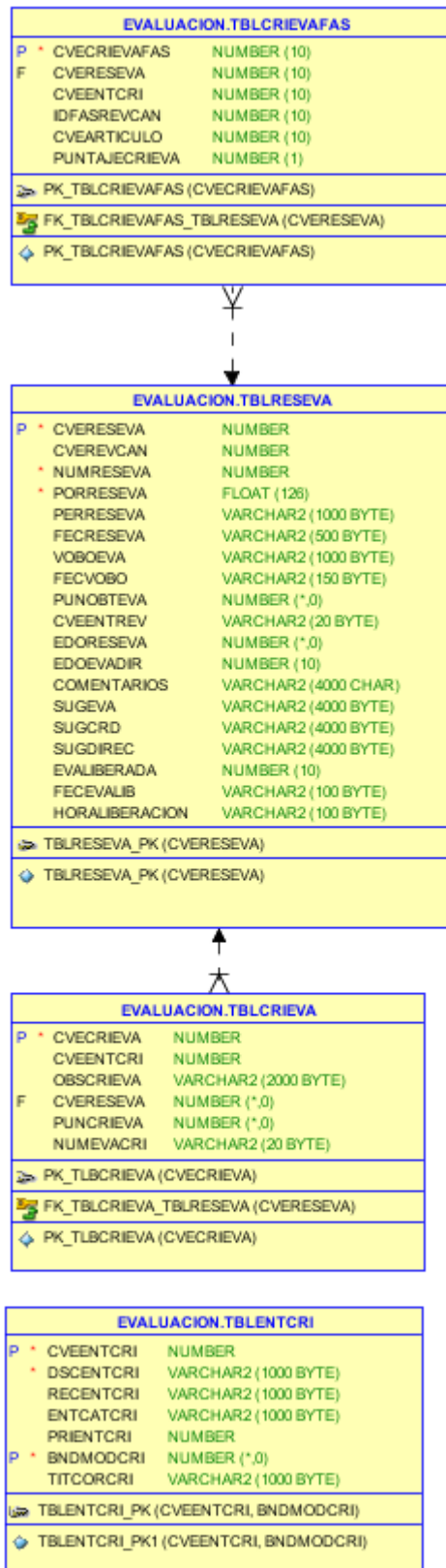
Desarrolladores:

Liliana González Morales,
Alma Rosa Segundo Escobar.

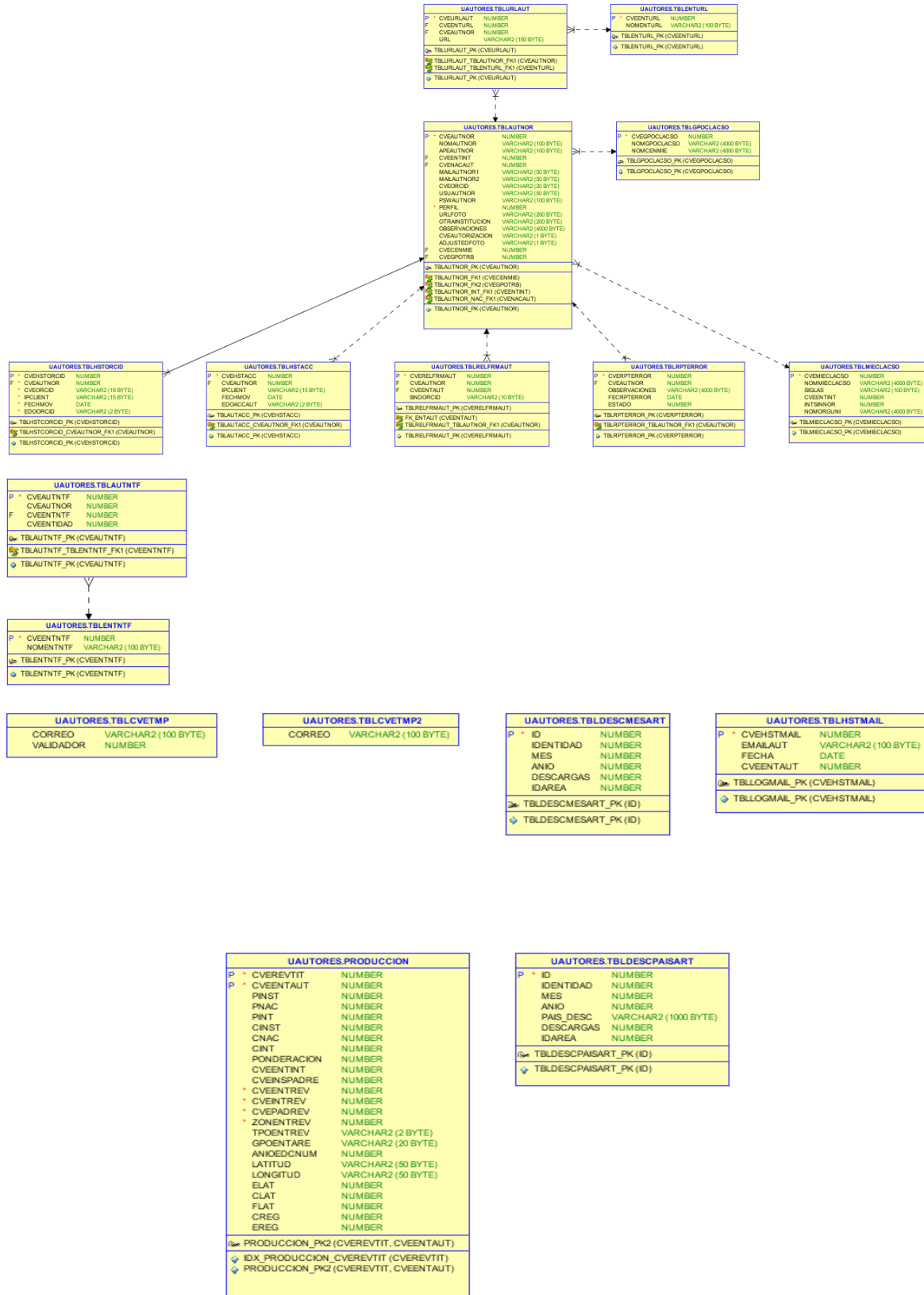
Esquema: ARRIBOS



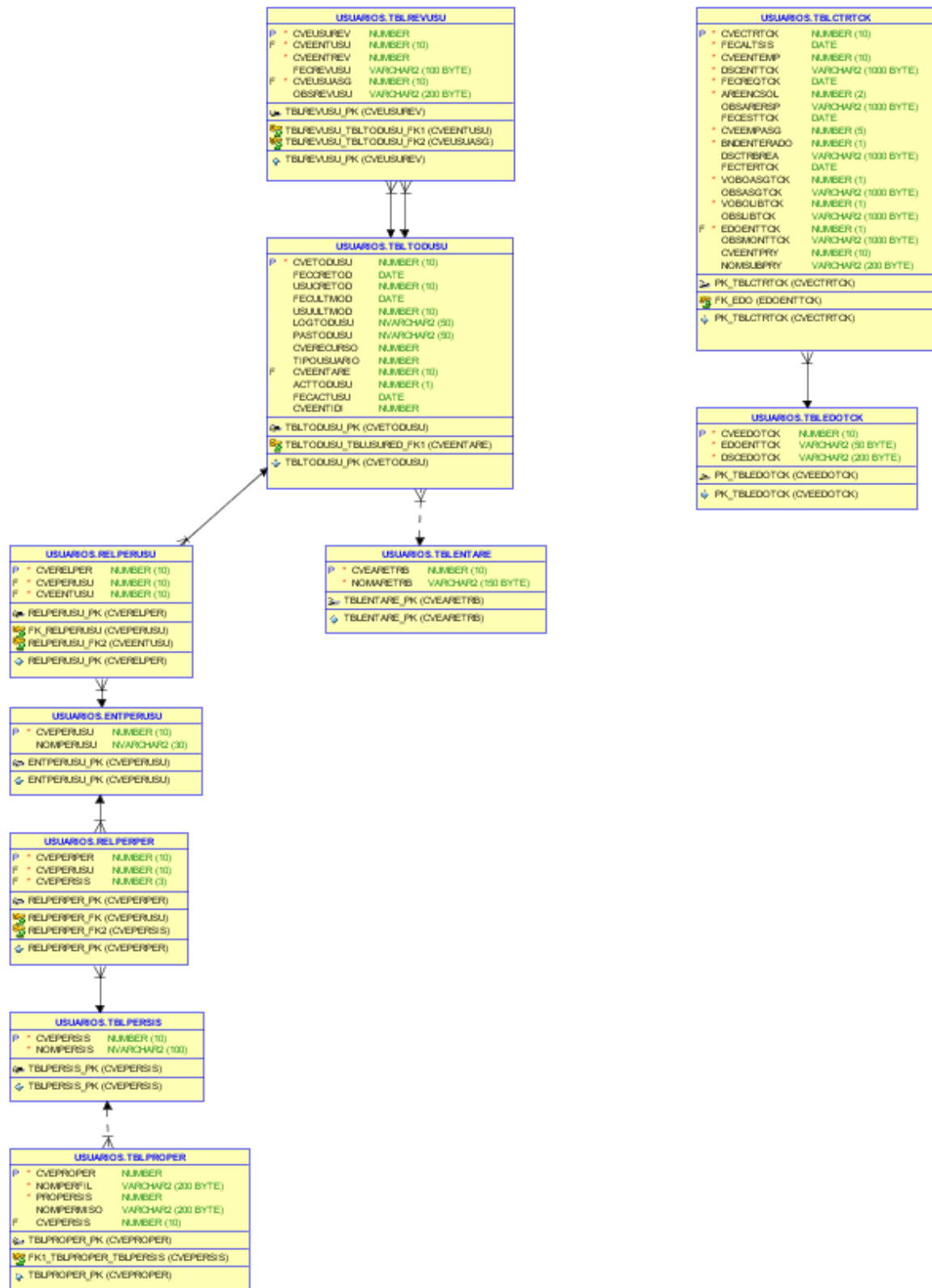
Esquema: EVALUACION



Esquema: UAUTORES



Esquema: USUARIOS



USUARIOS.SPTBITGRL	
P *	CVEBITGRL NUMBER
F *	CVEPROTEC NUMBER
	FECPROTEC DATE
	FECINPRO DATE
	FECFINPRO DATE
	EDOEJEPRO NUMBER
	OSSEJEPRO VARCHAR2 (2000 BYTE)
↳	SPTBITGRL_PK (CVEBITGRL)
↳	SPTBITGRL_SPTPROTEC_FK1 (CVEPROTEC)
↳	SPTBITGRL_PK (CVEBITGRL)

USUARIOS.SPTPROTEC	
P *	CVEPROTEC NUMBER
	NOMPROTEC VARCHAR2 (1000 BYTE)
↳	SPTPRCTEC_PK (CVEPROTEC)
↳	SPTPRCTEC_PK (CVEPROTEC)

USUARIOS.TBLUSURED	
P *	CVEUSURED NUMBER (10)
	FECREGUSU DATE
	STALUSURED NUMBER (1)
	FECINGUSU DATE
	NOMUSURED NVARCHAR2 (30)
	APEUNUSU NVARCHAR2 (30)
	AREDOSUSU NVARCHAR2 (20)
	SEUSURED NUMBER (1)
	FECNACUSU DATE
	GRAMAXEST NVARCHAR2 (50)
	CVEGPOTRB NUMBER (10)
	ACTPRIUSU NVARCHAR2 (50)
	TELCASUSU NVARCHAR2 (50)
	CELUSURED NVARCHAR2 (20)
	EMALUSURED NVARCHAR2 (50)
	LUGNACUSU NVARCHAR2 (50)
	CALUSURED NVARCHAR2 (100)
	CLUSURED NVARCHAR2 (100)
	COLUSURED NVARCHAR2 (100)
	EDOUSURED NVARCHAR2 (100)
	CODPOSURED NVARCHAR2 (100)
	FECRETRED DATE
↳	TBLUSURED_PK (CVEUSURED)
↳	TBLUSURED_PK (CVEUSURED)

USUARIOS.RELREVUSU	
P *	CVEREVUSU NUMBER (10)
	CVEREVACE NUMBER (10)
	CVETODUSU NUMBER (10)
	CVEREVCAN NUMBER (10)
↳	RELREVUSU_PK (CVEREVUSU)
↳	RELREVUSU_PK (CVEREVUSU)

USUARIOS.SPTBITDET	
*	CVEBITDET NUMBER
*	CVEENTREV NUMBER
	EXPNOIMREV VARCHAR2 (100 BYTE)
	EXPRISN VARCHAR2 (100 BYTE)
	EXPREVSN VARCHAR2 (100 BYTE)
	EXPREVPAIS VARCHAR2 (100 BYTE)
	EXPREVAREA VARCHAR2 (100 BYTE)
	EXPREVNOREG VARCHAR2 (100 BYTE)
	CVEBITGRL NUMBER
	REVNOREGRED VARCHAR2 (100 BYTE)
	INDTPOODM NUMBER
	CVEREVNUM NUMBER
	INDNUMMG NUMBER
	REVNOREGSD VARCHAR2 (100 BYTE)

USUARIOS.AREADSUSU	
P *	CVEAREADS NUMBER (3)
	NOMAREADS NVARCHAR2 (100)
↳	AREADSUSU_PK (CVEAREADS)
↳	AREADSUSU_PK (CVEAREADS)

USUARIOS.TBLENTPER	
P *	CVEENTPER NUMBER (2)
	NOMENTPER NVARCHAR2 (30)
↳	TBLENTPER_PK (CVEENTPER)
↳	TBLENTPER_PK (CVEENTPER)

USUARIOS.TBLGRAACA	
P *	CVEGRAACA NUMBER (2)
	NOMGRAACA NVARCHAR2 (50)
↳	TBLGRAACA_PK (CVEGRAACA)
↳	TBLGRAACA_PK (CVEGRAACA)

USUARIOS.TBLENTPRY	
*	CVEENTPRY NUMBER
	NOMENTPRY VARCHAR2 (30 BYTE)

USUARIOS.TBLUSUTRB	
	CVEUSUTRB NUMBER (10)
	CVEENTUSU NUMBER (10)
	CVEREVNUMARB NUMBER (10)
	FECUSUTRB DATE
	TPORRIBO NUMBER (1)
	CVEUSUASG NUMBER (10)
	OBSREGNUM VARCHAR2 (1000 BYTE)

USUARIOS.RELCAPVAL	
P *	CVECAPVAL NUMBER (10)
	CVEUSUVAL NUMBER (10)
	CVEUSUCAP NUMBER (10)
↳	RELCAPVAL_PK (CVECAPVAL)
↳	RELCAPVAL_PK (CVECAPVAL)

USUARIOS.RELREVRES	
P *	CVEREVRES NUMBER (10)
	CVEREVACE NUMBER (10)
	CVEREVCAN NUMBER (10)
	CVEREVRES NUMBER (10)
↳	RELREVRES_PK (CVEREVRES)
↳	RELREVRES_PK (CVEREVRES)

Esquema: VALIDACION

VALIDACION.VLDCAPARCART		
P *	CVEVALRCART	NUMBER
	CVEREVTIT	NUMBER
	VALPDF	NUMBER (1)
	VALHTML	NUMBER (1)
	FECVALRCART	DATE
	USUVALRCART	NUMBER
	VLDCAPARCART_PK (CVEVALRCART)	
	VLDCAPARCART_PK (CVEVALRCART)	

VALIDACION.VLDENTAUT		
P *	CVEVDENTAUT	NUMBER (10)
F *	CVEENTAUT	NUMBER (10)
	VLDNOMENTAUT	NUMBER (1)
	VLDAPSPATAUT	NUMBER (1)
	VLDAPSMATAUT	NUMBER (1)
	VLDNACENTAUT	NUMBER (1)
	VLDEMAILAUT	NUMBER (1)
	VLDIRENTAUT	NUMBER (1)
	VLDTELENTAUT	NUMBER (1)
	VLDCEVENTINS	NUMBER (1)
	VLDFIRMAAUT	NUMBER (1)
	VLDWEBPERAUT	NUMBER (1)
	VLDCEPENTAUT	NUMBER (1)
	VLDCIUENTAUT	NUMBER (1)
	VLDEMAILINSAUT	NUMBER (1)
	VLDMOVILENTAUT	NUMBER (1)
	VLDFAVENTAUT	NUMBER (1)
	VLDURLCVAUT	NUMBER (1)
	VLDURLFOTOAUT	NUMBER (1)
	FECULTVALIDACION	DATE
	USULTVALIDACION	NUMBER
	VLDTEMASAUT	NUMBER (1)
	VLDPRIENTAUT	NUMBER (1)
	VLDENTAUT_PK (CVEVDENTAUT)	
	VLDENTAUT_FK1 (CVEENTAUT)	
	VLDENTAUT_PK (CVEVDENTAUT)	

VALIDACION.VLDNUMLINEA		
P *	CVEVDNUMLINEA	NUMBER (10)
	VLDNUMPDF	NUMBER (1)
	VLDNUMHTML	NUMBER (1)
	CVEREVNUM	NUMBER (15)
	VLEDITOR	NUMBER (1)
	VLDNUMLINEA_PK (CVEVDNUMLINEA)	
	VLDNUMLINEA_PK (CVEVDNUMLINEA)	

VALIDACION.VLDTITRSM		
P *	CVEVLDITRSM	NUMBER (10)
F *	CVEITRSM	NUMBER (10)
	VLDRSMITITULO	NUMBER (1)
	VLDPALCVETIT	NUMBER (1)
	VLDIDITRSM	NUMBER (1)
	VLDORDITRSM	NUMBER (1)
	FECULTVALIDACION	DATE
	USULTVALIDACION	NUMBER (10)
	VLDTITRSM_PK (CVEVLDITRSM)	
	VLDTITRSM_PK (CVEVLDITRSM)	

VALIDACION.TBLVALREF		
P *	CVEVALREF	NUMBER
	CVEREVTIT	NUMBER (15)
	BNDVALREF	NUMBER (1)
	TBLVALREF_PK (CVEVALREF)	
	TBLVALREF_PK (CVEVALREF)	

VALIDACION.VLDREVSEC		
P *	CVEVDREVSEC	NUMBER (10)
F *	CVEENTSEC	NUMBER (10)
	VLDNUMENTSEC	NUMBER (1)
	VLDORDENTSEC	NUMBER (1)
	FECULTVALIDACION	DATE
	USULTVALIDACION	NUMBER
	VLDREVSE_PK (CVEVDREVSEC)	
	VLDREVSE_PK (CVEVDREVSEC)	

VALIDACION.VLDREVTIT		
F *	VLDREVTIT	NUMBER (10)
P *	CVEREVTIT	NUMBER (15)
	VLDNOMREVTIT	NUMBER (1)
	VLDCEVENTTEM	NUMBER (1)
	VLDURLREVTIT	NUMBER (1)
	VLDCEVENTSEC	NUMBER (1)
	VLDREVT	NUMBER (1)
	VLDPAGREVTIT	NUMBER (1)
	VLDCLAREVTIT	NUMBER (1)
	VLDITITSEGIDI	NUMBER (1)
	VLDITITERIDI	NUMBER (1)
	VLDDOIITITULO	NUMBER (1)
	VLDTPOLICITIT	NUMBER (1)
	VLDDERRESTIT	NUMBER (1)
	VLDIDIORGTIT	NUMBER (1)
	VLDSEGIDITIT	NUMBER (1)
	VLDTERIDITIT	NUMBER (1)
	VLDRECUBEBLEC	NUMBER (1)
	VLDRECTIT	NUMBER (1)
	VLDRECEUNO	NUMBER (1)
	VLDRECEEDOS	NUMBER (1)
	VLDRECEENTRES	NUMBER (1)
	VLDRECEACCEPTIT	NUMBER (1)
	VLDRECEPUBTIT	NUMBER (1)
	FECULTVALIDACION	DATE
	USULTVALIDACION	NUMBER
	VLDORDREVTIT	NUMBER (1)
	VLDREVTIT_PK (CVEREVTIT)	
	VLDREVTIT_PK (CVEREVTIT)	

VALIDACION.VALMODART		
P *	CVEVALMODART	NUMBER (10)
F *	CVEREVTIT	NUMBER (15)
	VALMETADATOS	NUMBER (1)
	VALAUTOR	NUMBER (1)
	VALRESUMEN	NUMBER (1)
	FECVALMODART	DATE
	USUVALMODART	NUMBER
	VALPDFHTML	NUMBER
	VALMODART_PK (CVEVALMODART)	
	VALMODART_FK1 (CVEREVTIT)	
	VALMODART_PK (CVEVALMODART)	

VALIDACION.VLDREVNUM		
P *	CVEVDREVNUM	NUMBER (10)
	CVEREVNUM	NUMBER (10)
	VLDNUMREVNUM	NUMBER (1)
	VLDVOLREVNUM	NUMBER (1)
	VLDANOEDONUM	NUMBER (1)
	VLDMESREVNUM	NUMBER (1)
	VLDCLANUMARB	NUMBER (1)
	VLDTPOPERARB	NUMBER (1)
	FECULTVALIDACION	DATE
	USUULTVALIDACION	NUMBER
	VLDREVNUM_PK (CVEVDREVNUM)	
	VLDREVNUM_PK (CVEVDREVNUM)	

DIAGRAMA ENTIDAD RELACION COMPLETO

[**FULL-DER-BD.html**](#)